

OVERVIEW

Qorela DC - the revolutionary big data analytics platform that streamlines your data journey. Say goodbye to the time-consuming processes of finding, gathering, and analyzing dispersed data across silos. With Qorela DC, all your data is already linked and readily available at your fingertips, saving your precious time and resources.

Our powerful automation tools speed up results by effectively managing crucial analytical tasks, empowering users to effortlessly create, comprehend, and execute complex queries in record time. And with advanced visualizations, Qorela DC offers an intuitive and dynamic representation of processed data, allowing for easy interpretation and analysis.

TARGET MARKETS

- Law Enforcement
- Manufacturing
- Defense
- Healthcare
- Service Providers
- Banking & Finance
- E-mobility
- Airline

ABOUT US



We offer strategic solutions to all institutions and organizations operating in the global market through our headquarter which is located in Ankara and also branch offices in Istanbul, Baku, Doha, Dubai, Nursultan and Silicon Valley (California). We follow security technology trends with our R&D investments and aim to give value to promising collaborations around the world.

InterProbe designs unique products, solutions, and services for the technological needs of every sector at different levels, especially for institutions and organizations with critical fields of activity.



 qorela.com

 info@qorela.com



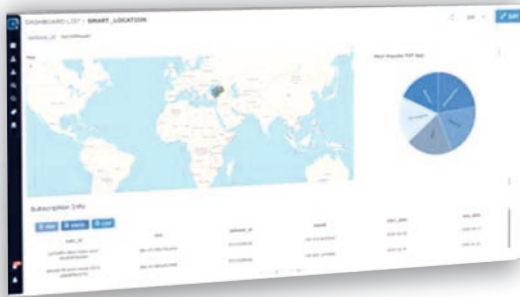
Qorela_{dc}

Self service big data analytics platform



KEY FEATURES

Visualize results in various formats (e.g. maps, infographics) to help understand and analyze data effectively.



- Customizable dashboards show relevant data and metrics.
- Data visualization with charts, graphs, and maps helps you quickly understand data.
- Real-time updates on current data available on dashboards.
- Configure dashboards for notifications when certain conditions or thresholds are met.
- Dashboards enable multiple users to access and interact with data for collaboration and sharing of insights.

How did one get those results?

Qorela DC is a platform for data analysis that provides fully interactive, human-driven, machine-assisted storytelling analyses, and graphical representation of processed data.



- Easy-to-use interface for exploring and querying data without technical expertise.
- Easy query-building tools for complex queries.
- Advanced visualization options for understanding and interpreting data.
- Flexible data access and permissions control for team collaboration and sharing.
- Scalability for handling large amounts of data and high query performance
- Support for various use cases including reporting, dashboarding, and data science.
- Ensures data security and authorized access.
- Set up alerts for terms of interest detection during queries.

Where did all these data come from?

Data Ingestions: Easily and securely ingests various data types for analysis and visualization through a file upload or external data source connection.



- Ingests data from various structured, semi-structured, and unstructured sources.
- Integration with various data sources.
- Transforms data during ingestion with filtering, aggregating, and cleansing operations.
- Schedules data ingestion jobs to run at regular intervals or one-time.
- Secure data transfer, storage, and encryption support.
- Scalable for large data volumes and horizontal scaling for growing organizations.
- Easy-to-use interface for configuring data ingestion and viewing status.